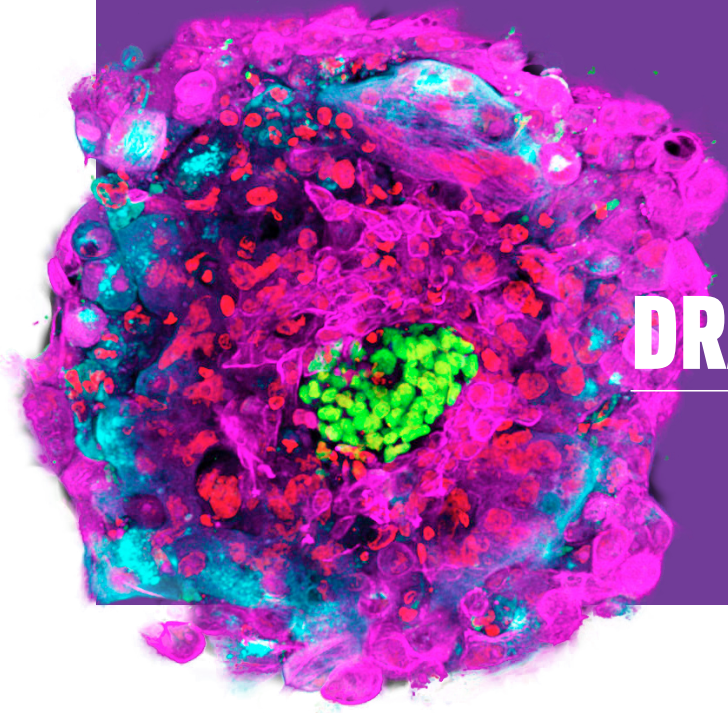


center for
HEALTH + BIOSCIENCES
Rice University's Baker Institute for Public Policy



DRAWING THE LINE

ASSESSING AND ANALYZING
THE INTERNATIONAL GUIDELINES
ON HUMAN EMBRYO RESEARCH

December 13–14, 2018

Brocher Foundation
Geneva, Switzerland

Funding for this program was generously provided by grants from
the **Brocher Foundation** and **The Greenwall Foundation**.

DRAWING THE LINE

About the Conference

Human embryo research is restricted in many countries to the first 14 days of development, a stage prior to the formation of the primitive streak—an observable, early step toward the forming of neural tissue. In 2016, scientists published the first reports on cultivating human embryos up to this time point, having stopped their research because of the restriction and for other nonscientific reasons. As a result, some scholars are now questioning the validity of the 14-day limit. Many experts believe the guidelines should reflect moral, ethical and societal considerations as well as scientific justifications, though uncertainty over how to address these issues when reviewing current policies remains.

At this workshop, distinguished scholars in the fields of developmental biology, philosophy, bioethics and public policy convene at the Brocher Foundation in Geneva, Switzerland, to assess the 14-day rule for human embryo research from scientific, ethical, legal and social perspectives. Their goal will be to explore ethical frameworks that will inform national bodies and nongovernmental organizations in developing human embryo research regulations and guidelines.

Organizer

Rice University's Baker Institute for Public Policy

The mission of Rice University's Baker Institute is to help bridge the gap between the theory and practice of public policy by drawing together experts from academia, government, media, business and nongovernmental organizations. By involving policymakers, scholars and students, the institute seeks to improve the debate on selected public policy issues in a nonpartisan manner and to make a difference in the formulation, implementation and evaluation of public policy, both domestic and international. The Baker Institute is ranked No. 3 among university-affiliated think tanks in the world. The efforts of Baker Institute fellows and affiliated Rice faculty focus on several ongoing research projects, details of which can be found on the institute's website, www.bakerinstitute.org.

The Center for Health and Biosciences

The Center for Health and Biosciences (CHB) employs comprehensive research analysis to develop health policy recommendations that promote health and well-being in the United States and globally. Combining researchers from Rice University and the Texas Medical Center, the CHB offers a unique setting for medical and policy professionals to address four major research themes: U.S. health care, global health, public health and the future of medicine. Within these areas, research questions capitalize on specific areas of expertise among our fellows and scholars, including health economics, maternal and child health, biomedical research policy, and the control of neglected infectious diseases.

Additional support for this program has been generously provided through the Baker Institute's State of Qatar Endowment for International Stem Cell Policy.

Participants

Organizers

Kirstin R.W. Matthews, Ph.D., Project Principal Investigator

Fellow in Science and Technology Policy, Baker Institute for Public Policy, Rice University
krwm@rice.edu

Ali H. Brivanlou, Ph.D.

Robert & Harriet Heilbrunn Professor and Head of the Laboratory of Stem Cell Biology and Molecular Embryology, The Rockefeller University
brvnlou@mail.rockefeller.edu

Inmaculada de Melo–Martin, Ph.D.

Professor of Medical Ethics, Weill Cornell Medical College
imd2001@med.cornell.edu

Nuria Gallego Marquez

Undergraduate and Baker Institute Intern, Rice University
ng16@rice.edu

Ana S. Iltis, Ph.D.

Professor of Philosophy and Director of the Center for Bioethics, Health, and Society, Wake Forest University
iltisas@wfu.edu

Jason S. Robert, Ph.D.

Lincoln Chair in Ethics, Associate Professor of Life Sciences, and Director of the Lincoln Center for Applied Ethics, Arizona State University
Jason.Robert@asu.edu

Sharon Tsao

Research Associate for Science and Technology Policy, Baker Institute for Public Policy, Rice University
sharon.tsao@rice.edu

Daniel S. Wagner, Ph.D.

Associate Professor of BioSciences, Rice University
dswagner@rice.edu

Workshop Participants

Eric Anthony

Policy Director, International Society for Stem Cell Research (ISSCR)
eanthony@isscr.org

Marieke Bigg

Ph.D. Candidate, University of Cambridge
mlb57@cam.ac.uk

Sarah Franklin, Ph.D.

Professor of Sociology, University of Cambridge
sbf25@cam.ac.uk

DRAWING THE LINE

Søren Holm, Ph.D.

Professor of Bioethics, Centre for Social Ethics and Policy at the School of Law, University of Manchester and Professor of Medical Ethics, University of Oslo
soren.holm@manchester.ac.uk

Insoo Hyun, Ph.D.

Professor of Bioethics, Case Western Reserve University
ixh14@case.edu

Ingrid Metzler, Ph.D.

Hertha-Firnberg Fellow, Department of Science and Technology Studies, University of Vienna
ingrid.metzler@univie.ac.at

Matteo A. Mole, Ph.D.

Postdoctoral Scientist in Physiology, Development and Neuroscience, University of Cambridge
mam238@cam.ac.uk

Jutta Reinhard-Rupp, Ph.D.

Head of Merck Global Health Institute, Merck Serono
Jutta.reinhard-rupp@merckgroup.com

Jeremy Sugarman, M.D.

Harvey M. Meyerhoff Professor of Bioethics and Medicine, and Professor of Medicine, Johns Hopkins University
jsugarman@jhu.edu

Jochen Taupitz, Ph.D.

Chair of Civil Law, Civil Procedure Law, International Private Law and Comparative Law, University of Mannheim
taupitz@jura.uni-mannheim.de

Giuseppe Testa, M.D., Ph.D.

Director of the Stem Cell Epigenetics Unit, European Institute of Oncology
giuseppe.testa@ieo.eu

Thursday, December 13, 2018 — Workshop Day 1

7:30 Breakfast

Welcoming Remarks

9:00 **Kirstin R.W. Matthews, Ph.D.**

Session I — Scientific Perspectives

Moderator: **Giuseppe Testa, M.D., Ph.D.**

9:10 *Review of Human Embryo Development, Fertilization to Eight Weeks*
Daniel S. Wagner, Ph.D.

Current Findings in Human Embryo Research
Matteo A. Mole, Ph.D.

10:30 Break

Session I — Scientific Perspectives (continued)

11:00 *Future Potential and Questions to Explore in Human Embryos*
Ali H. Brivanlou, Ph.D.

Open Discussion

12:15 Lunch

Session II — Policy Perspectives

13:45 *DHEW, Warnock, and a Review of International Human Embryo Policies*
Kirstin R.W. Matthews, Ph.D.

Open Discussion

14:40 Break

Session III — Ethical Perspectives

Moderator: **Jeremy Sugarman, M.D.**

15:00 *Moral Status*
Ana S. Iltis, Ph.D.

The Obligation to Do Science and Other Normative Considerations
Jason S. Robert, Ph.D.

Implications of Normative Considerations for the 14-day Rule
Inmaculada de Melo-Martin, Ph.D.

17:15 End of Day 1

19:30 Dinner

Friday, December 14, 2018 — Workshop Day 2

- 7:30 Breakfast
- 8:30 Recap of Day 1 and Questions
Kirstin R.W. Matthews, Ph.D.

Session IV — Perspectives on National and International Policies

Moderator: **Sharon Tsao**

The ISSCR Guidelines' Impact on Human Embryo Research
Insoo Hyun, Ph.D.

Current U.K. Policies Regarding Human Embryo Research
Sarah Franklin, Ph.D.

Germany's Policies on Human Embryo Research
Jochen Taupitz, Ph.D.

Merck and Industry's Position on Human Embryo Research
Jutta Reinhard-Rupp, Ph.D.

Spain's Policies on Human Embryo Research
Inmaculada de Melo-Martin, Ph.D.

France's Policies on Human Embryo Research
Nuria Gallego Marquez

Norway's Policies on Human Embryo Research
Søren Holm, Ph.D.

Italy's Policies on Human Embryo Research
Giuseppe Testa, M.D., Ph.D.

Austria's Policies on Human Embryo Research
Ingrid Metzler, Ph.D.

Open Discussion

- 10:00 Break

Session V — Development of Questions and Framework

Moderator: **Ana Iltis, Ph.D.**

- 10:20 Roundtable Discussion

Prompt: Do we need a deadline for human embryo research beyond which such research should not proceed? Why or why not? Should the deadline be extended beyond the current 14-day limit? Why or why not?

- 12:00 Lunch

DRAWING THE LINE

Session VI — Development of Questions and Framework

Moderator: **Jason S. Robert, Ph.D.**

13:00 Roundtable Discussion

Prompt: Should there be an international consensus? Are there some minimum principles on which we can reach a consensus? What are the most constrained and most permissive options based on cultural concerns? What organizations should lead?

Closing Discussion and Future Steps

Moderator: **Kirstin R.W. Matthews, Ph.D.**

14:30 Roundtable Discussion

Prompt: What types of reports, papers or public engagements would help move discussions forward, promote consensus and bring stakeholder opinions together?

15:00 Adjourn